



Terravesta
Growing Innovation

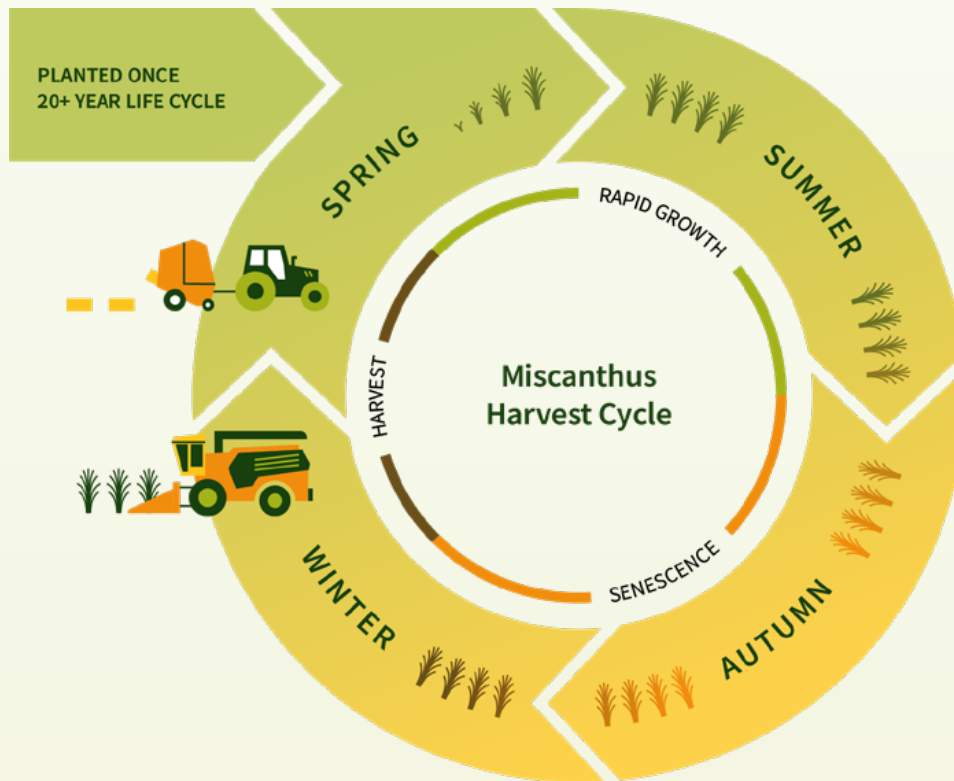
Miscanthus x Giganteus ATHENA™

Perennial high-yielding biomass grass



How is it planted and harvested?

It's planted once in late spring and the rhizomes supplied are carefully selected to deliver maximum vigour. Terravesta offers the necessary machinery to ensure that Terravesta Athena[™] is planted to the most suitable specifications. It's harvested during late winter and early spring with a forage harvester, and then Hesston baled.



"Miscanthus has been good for our risk management strategy and those fields now have no cultivations, no machinery costs and no inputs. It reduces risk, we've got less money tied up and once we've paid back the capital establishment for the crop, everything else is a bonus, for potentially 20 years."

Adam Bradshaw, Lincolnshire arable farmer



"In 2013 we made the decision to plant 15 hectares of Miscanthus in a field that was prone to flooding. It's the sort of land that's difficult to establish crops on, because it's water-logged. This meant we were spending a fortune on inputs and preparing the seed beds. We had 90% success with Miscanthus establishment, and the support we've received from Terravesta has been invaluable."

Bill Lewis, Norfolk mixed farmer



"Miscanthus has dealt with a blackgrass problem because the high crop canopy literally swamps it and blocks out the light. We grow 26 hectares of Miscanthus on heavy clay land that's prone to flooding, and it's doing well, filling out nicely and continually improving. The beauty with Miscanthus once it's established it'll keep producing year-on-year, with year six being the optimum year. In other words, once the rhizomes are in place, it's just a case of letting it get on with itself over the next 20 years."

Mark Wiseman, Oxfordshire mixed farmer



What is Terravesta Athena™ ?

Terravesta Athena™ is the world's best performing, commercially available Miscanthus variety. It has undergone rigorous selection and development to ensure healthy, stable yields, and tolerance to more extreme conditions. When compared to the original Miscanthus giganteus, it has an earlier first harvest in year two, it's higher yielding and the biomass quality is better, with higher calorific values and decreased ash content.

£1,232 

Average output, per hectare per year over 15 years (price * yield)



Delivers long-term off-take contracts. 100% finance available from Oxbury Bank.



Improves soil, air and water health, and encourages biodiversity.



2.35T

CO₂e/ha/year carbon capture.

20+

Year life span, planted once.



Requires minimal inputs.

15



Year returns with an annual price increase.

Establishment Cost
per hectare

£2150* 

Base Price Payment
per tonne

£84.65 +RPIX

Average Lifespan Profit
per hectare, per year

£882

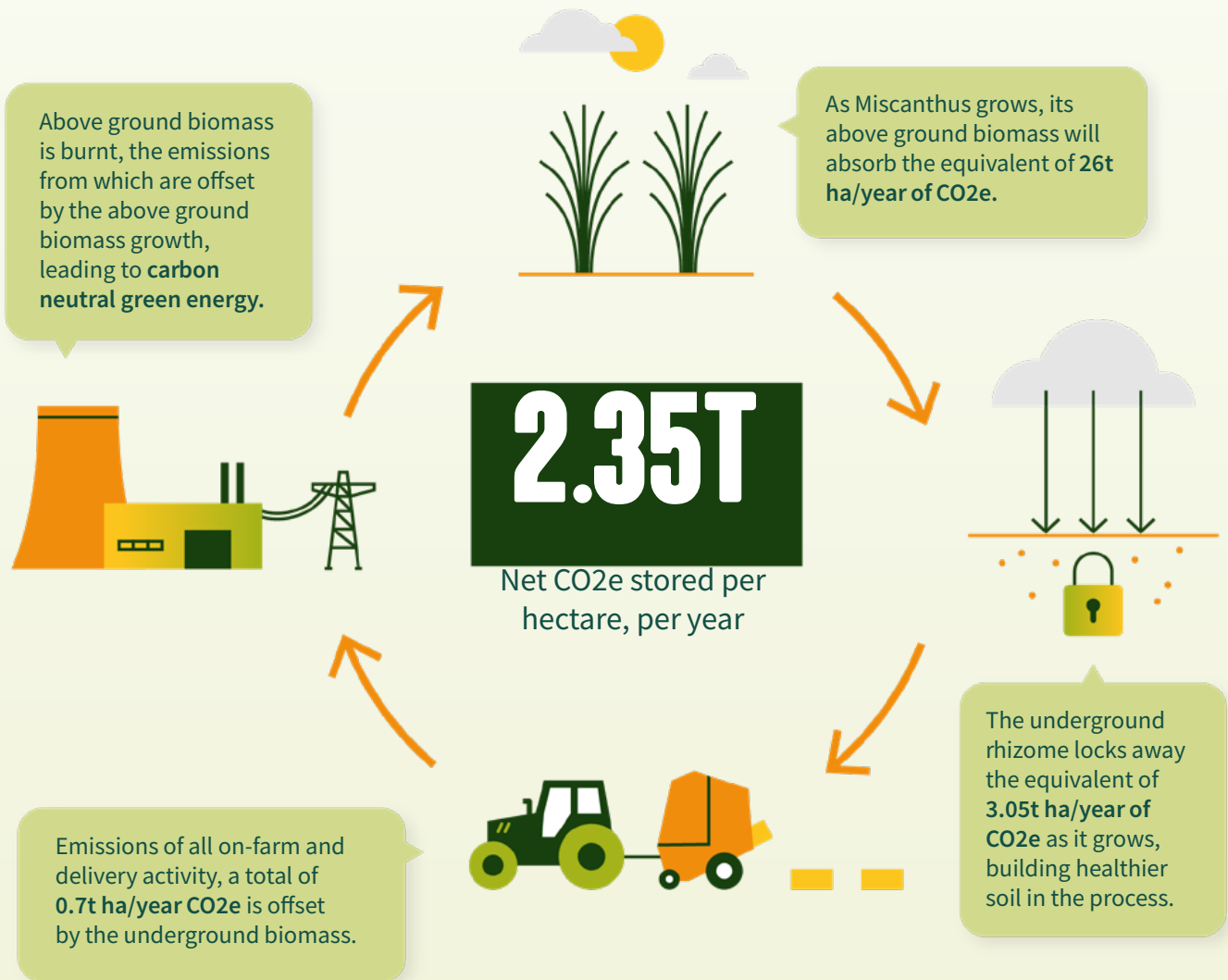
An upfront payment of £100/ha is required to secure your order. These figures do not include any additional payments you could receive from other sources such as the Sustainable Farming Incentive (SFI) or any payments towards carbon credits and would be in addition to what is listed.

Request a call if you want to be part of the CO₂ neutral revolution.



Carbon life cycle

The first dedicated, independent and peer-reviewed study* into Miscanthus life cycles shows that the above ground biomass grows annually and recycles all the carbon that's been produced through planting, harvesting and burning the crop for renewable electricity. At the same time, the underground rhizome and decaying leaf litter fixes and stores net 0.64 tonnes of carbon (2.35 tonnes CO₂e) per hectare, each year as it grows



Get in touch

Start reaping the rewards of Miscanthus, [click here](#) to request a callback.

Or contact us by email / telephone.

planting@terravesta.com
+441522 731873