

What is Terravesta Athena™ ?

Terravesta Athena™ is the world's best performing, commercially available Miscanthus variety. It has undergone rigorous selection and development to ensure healthy, stable yields, and tolerance to more extreme conditions. When compared to the original Miscanthus giganteus, it has an earlier first harvest in year two, it's higher yielding and the biomass quality is better, with higher calorific values and decreased ash content.



Improves soil, air and water health, and encourages biodiversity



2.35T

CO₂e/ha/year carbon capture

20+

Year life span, planted once



Requires no fertiliser and minimal inputs

Compared to standard Miscanthus giganteus

50%

Up to 50% more biomass yield per ha



More drought & heat resistant



Higher calorific value



Decreased ash content



Rhizomes are more vigorous after establishment and shorten the time to first harvest



Cultivated on Europe's largest rhizome nursery on a 2-year rotation and selected to conform to a strict quality protocol

Establishment cost
per hectare

€ 2,450.00

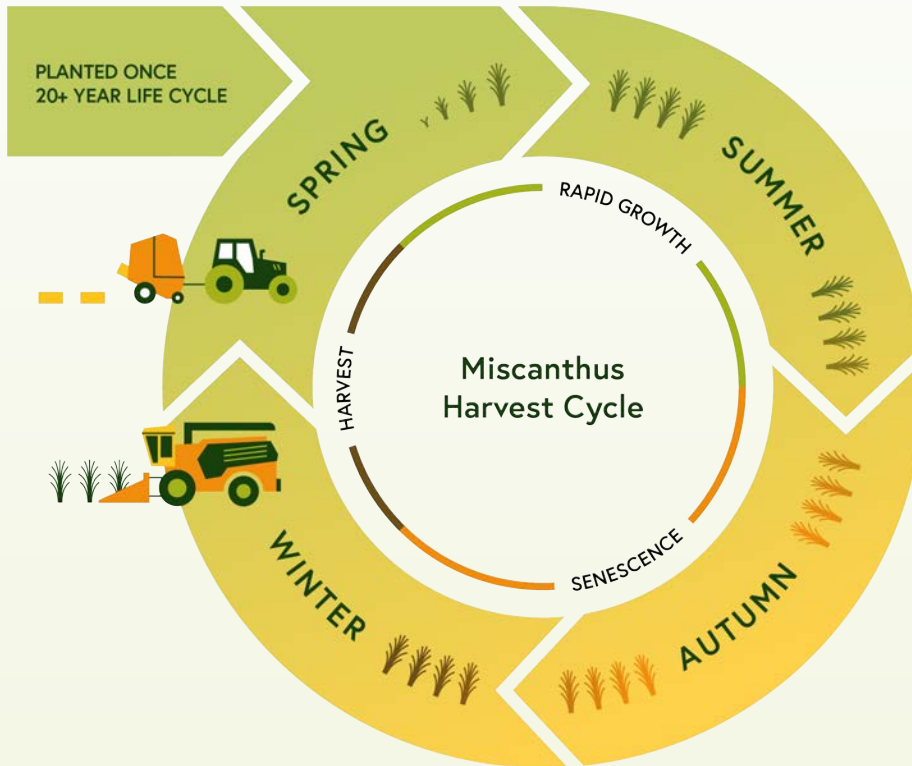
Early bird discount
per hectare

€ 2,340.00

The establishment cost has an early contracting 4.5% discount applied to the standard establishment price of € 2,450.00/ha if ordered by 30 September 2023. An upfront payment of € 100.00/ha is required to secure the "early bird" price. For either option further payments would then be scheduled 50% on 10 December and 50% on 15 February the following year.

How is it planted and harvested?

It's planted once in late spring and the rhizomes supplied are carefully selected to deliver maximum vigour. Terravesta provides the necessary machinery to ensure that Terravesta AthenaTM is planted to the most suitable specifications. It's harvested during late winter and early spring with a forage harvester, and then Hesston baled, this is a contractor job



"Miscanthus has been good for our risk management strategy and those fields now have no cultivation, no machinery costs and no inputs. It reduces risk, we've got less money tied up and once we've paid back the capital establishment for the crop, everything else is a bonus, for potentially 20 years."

Adam Bradshaw, Lincolnshire arable farmer



"In 2013 we made the decision to plant 15 hectares of Miscanthus in a field that was prone to flooding. It's the sort of land that's difficult to establish crops on, because it's water-logged. This meant we were spending a fortune on inputs and preparing the seed beds. We had 90% success with Miscanthus establishment, and the support we've received from Terravesta has been invaluable."

Bill Lewis, Norfolk mixed farmer

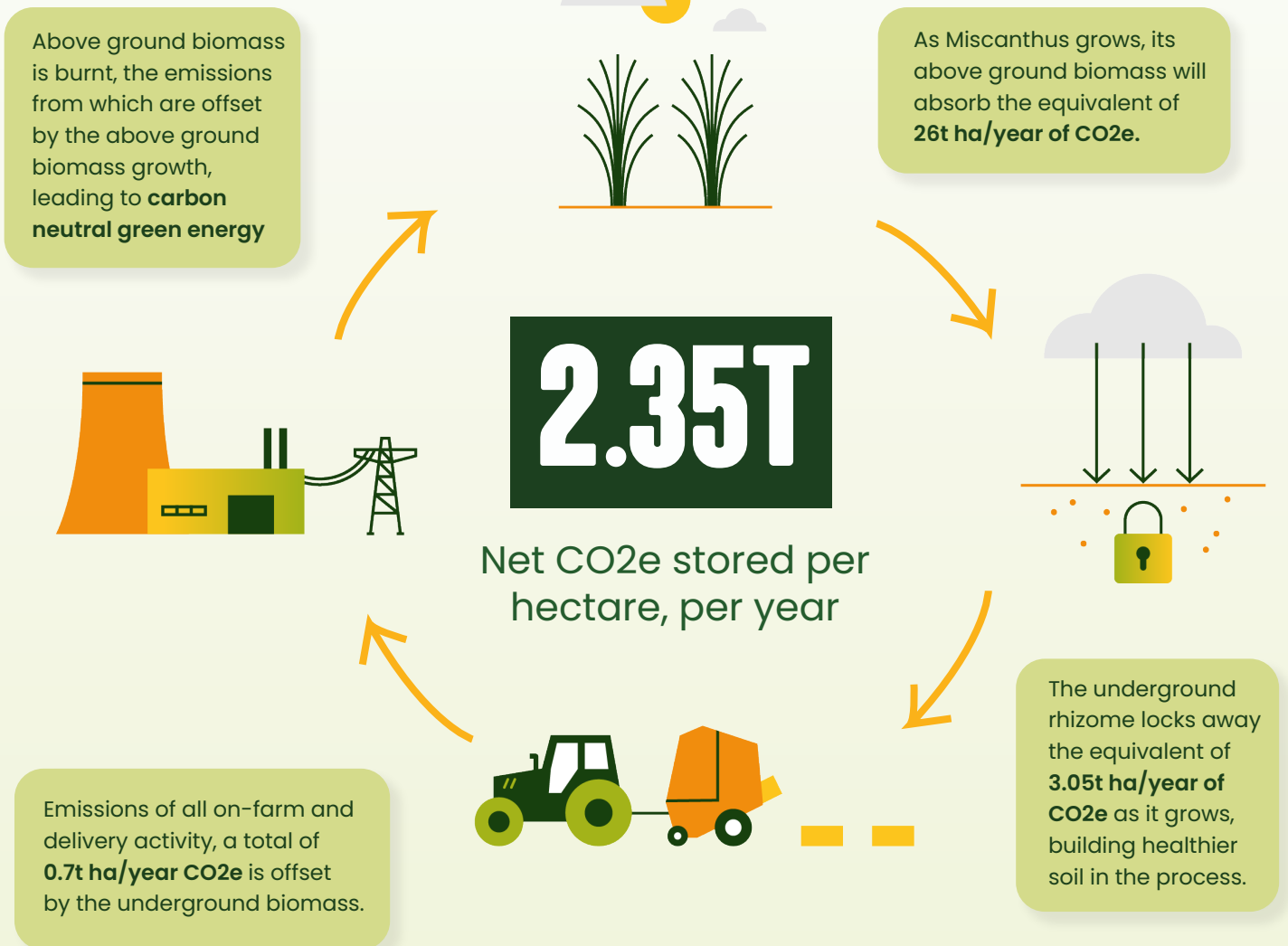


"Miscanthus has dealt with a blackgrass problem because the high crop canopy literally swamps it and blocks out the light. We grow 26 hectares of Miscanthus on heavy clay land that's prone to flooding, and it's doing well, filling out nicely and continually improving. The beauty with Miscanthus once it's established it'll keep producing year-on-year, with year six being the optimum year. In other words, once the rhizomes are in place, it's just a case of letting it get on with itself over the next 20 years."

Mark Wiseman, Oxfordshire mixed farmer

Carbon life cycle

The first dedicated, independent and peer-reviewed study* into Miscanthus life cycles shows that the above ground biomass grows annually and recycles all the carbon that's been produced through planting, harvesting and burning the crop for renewable electricity. At the same time, the underground rhizome and decaying leaf litter fixes and stores net 0.64 tonnes of carbon (2.35 tonnes CO₂e) per hectare, each year as it grows.



Get in touch

Start reaping the rewards of Miscanthus, [click here](#) to request a callback.

Or contact us by email / telephone.

andrzejm@terravesta.com

+48 518 386 979